

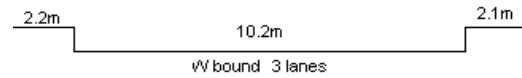
YEAR 2022

COVERAGE (B) STATION 2208

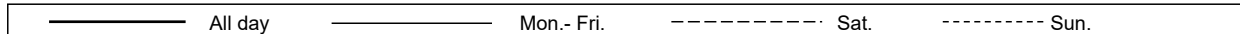
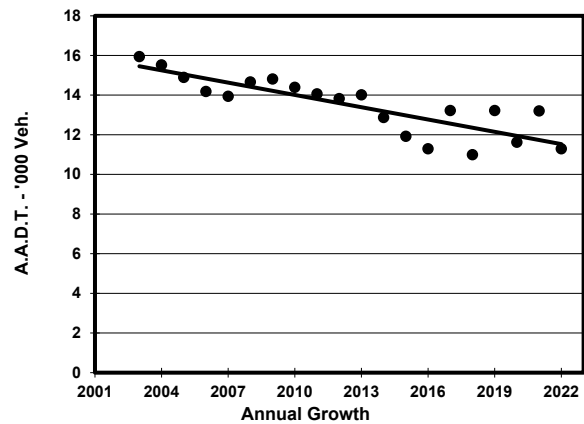
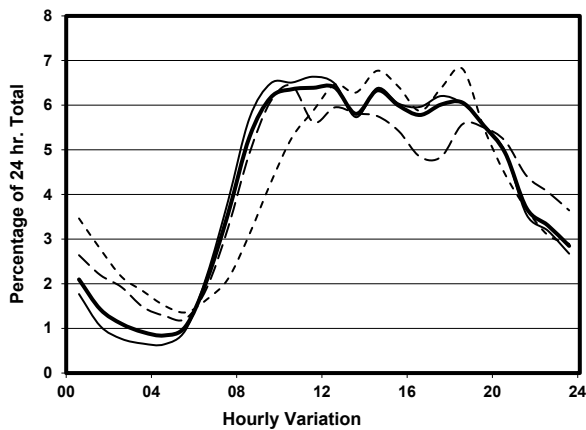
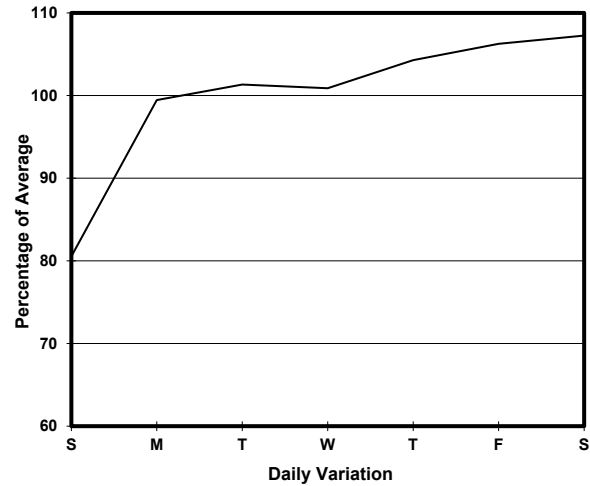
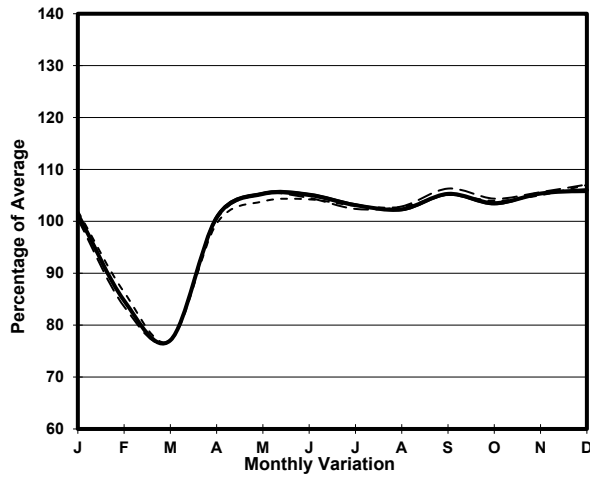
ROAD NETWORK MAJOR

ROAD TYPE PRIMARY DISTRIBUTOR

LINK QUEEN'S RD C (from QUEEN VICTORIA ST to BONHAM STRAND)



1. TRAFFIC FLOW VARIATION AND GROWTH



2. TRAFFIC CHARACTERISTICS (BY DIRECTION)

Parameter	All - Day	Mon. - Fri.	Sat.	Sun.
WEST BOUND				
A.A.D.T.	11290	11650	12310	9270
R 12 / 24 - %	70.2	72.1	64.5	65.7
R 16 / 24 - %	87.6	89.3	83.7	82.3
AM Peak Hour	0900-1000	0900-1000	0900-1000	0900-1000
One-way flow at AM peak hour	700	760	750	400
T - % (AM)	-	7.1	-	-
PM Peak Hour	1800-1900	1700-1800	1800-1900	1800-1900
One-way flow at PM peak hour	680	720	690	630
T - % (PM)	-	5.5	-	-
Prop.of commercial vehicles - 16 hr.	-	6.9	-	-
 A.A.D.T.	-	-	-	-
R 12 / 24 - %	-	-	-	-
R 16 / 24 - %	-	-	-	-
AM Peak Hour	-	-	-	-
One-way flow at AM peak hour	-	-	-	-
T - % (AM)	-	-	-	-
PM Peak Hour	-	-	-	-
One-way flow at PM peak hour	-	-	-	-
T - % (PM)	-	-	-	-
Prop.of commercial vehicles - 16 hr.	-	-	-	-

3. OTHER INFORMATION AND COMMENT

4. Vehicle classification and occupancy - Monday to Friday

Time		Class of vehicle									
		Motor Cycle	Private Car	Taxi	Private LB	PLB	Goods veh.		Non Fr. Bus	Fr. Bus	
							Light	M & H		SD	DD
0700-0800	Pro	1.7	23.8	41.7	0.9	1.7	23.0	0.9	0.0	0.0	6.4
	Ocp	1.0	1.2	1.4	14.0	2.5	1.2	1.0	0.0	0.0	14.2
0800-0900	Pro	5.7	30.7	34.7	1.1	0.6	19.3	1.7	1.1	0.0	5.0
	Ocp	1.0	1.2	1.4	3.5	9.0	1.4	1.3	1.0	0.0	13.3
0900-1000	Pro	5.0	39.6	33.6	0.0	0.5	14.1	2.5	0.0	0.0	4.6
	Ocp	1.0	1.1	1.2	0.0	1.0	1.2	1.2	0.0	0.0	12.4
1000-1100	Pro	1.9	26.9	39.0	1.4	0.0	24.1	2.8	0.0	0.0	3.9
	Ocp	1.0	1.3	1.4	2.3	0.0	1.6	1.2	0.0	0.0	12.3
1100-1200 Peak hour	Pro	5.1	39.7	26.5	0.5	0.0	19.3	4.1	0.5	0.0	4.3
	Ocp	1.0	1.2	1.5	1.0	0.0	1.6	1.4	64.0	0.0	12.4
1200-1300	Pro	4.9	43.9	30.8	0.4	0.4	12.3	2.1	0.8	0.0	4.3
	Ocp	1.1	1.4	1.5	1.0	3.0	1.3	1.8	11.0	0.0	10.8
1300-1400	Pro	6.7	46.0	23.3	0.0	0.5	15.0	3.1	1.0	0.0	4.4
	Ocp	1.0	1.2	2.0	0.0	3.0	1.4	1.3	5.0	0.0	12.4
1400-1500	Pro	4.0	47.5	25.8	0.0	0.0	15.2	1.5	1.0	0.0	5.1
	Ocp	1.0	1.5	1.8	0.0	0.0	1.7	1.3	9.5	0.0	10.8
1500-1600	Pro	2.7	50.0	28.8	0.5	0.0	9.8	1.6	1.1	0.0	5.4
	Ocp	1.0	1.3	1.5	1.0	0.0	1.3	2.0	7.0	0.0	13.1
1600-1700	Pro	3.0	55.3	26.4	1.0	0.0	8.6	0.5	0.5	0.0	4.7
	Ocp	1.2	1.4	1.8	2.0	0.0	1.4	1.0	1.0	0.0	15.5
1700-1800	Pro	3.8	43.7	38.5	0.0	0.0	8.6	0.5	0.0	0.0	5.0
	Ocp	1.1	1.6	1.4	0.0	0.0	1.3	2.0	0.0	0.0	17.8
1800-1900	Pro	7.2	57.8	28.0	0.0	0.0	2.4	0.0	0.5	0.0	4.1
	Ocp	1.1	1.6	1.9	0.0	0.0	2.0	0.0	18.0	0.0	34.3
1900-2000	Pro	14.5	46.6	31.6	0.5	0.0	2.5	0.0	0.5	0.0	3.8
	Ocp	1.0	1.3	1.7	3.0	0.0	1.2	0.0	20.0	0.0	23.9
2000-2100	Pro	9.1	39.9	41.1	0.6	0.6	4.0	0.0	0.0	0.0	4.7
	Ocp	1.0	1.3	1.9	1.0	5.0	1.6	0.0	0.0	0.0	17.8
2100-2200	Pro	6.0	38.9	37.9	1.0	1.0	5.0	3.0	0.0	0.0	7.2
	Ocp	1.0	1.4	2.0	2.0	3.0	1.2	2.3	0.0	0.0	14.1
2200-2300	Pro	5.5	41.5	39.3	1.1	1.1	2.2	2.2	0.0	0.0	7.1
	Ocp	1.2	1.7	2.3	3.0	5.0	2.5	1.5	0.0	0.0	13.1
16 hours	Pro	5.5	42.7	32.3	0.5	0.3	11.9	1.6	0.5	0.0	4.8
	Ocp	1.0	1.4	1.6	2.9	3.8	1.4	1.5	12.1	0.0	15.4

Legend: Pro. Proportion of vehicles in % (Sum may not add up to 100% due to figure rounding)*

Ocp. Average occupancy of vehicles including both driver and passengers*

M&H Medium and Heavy

* All traffic data are collected from combined bounds